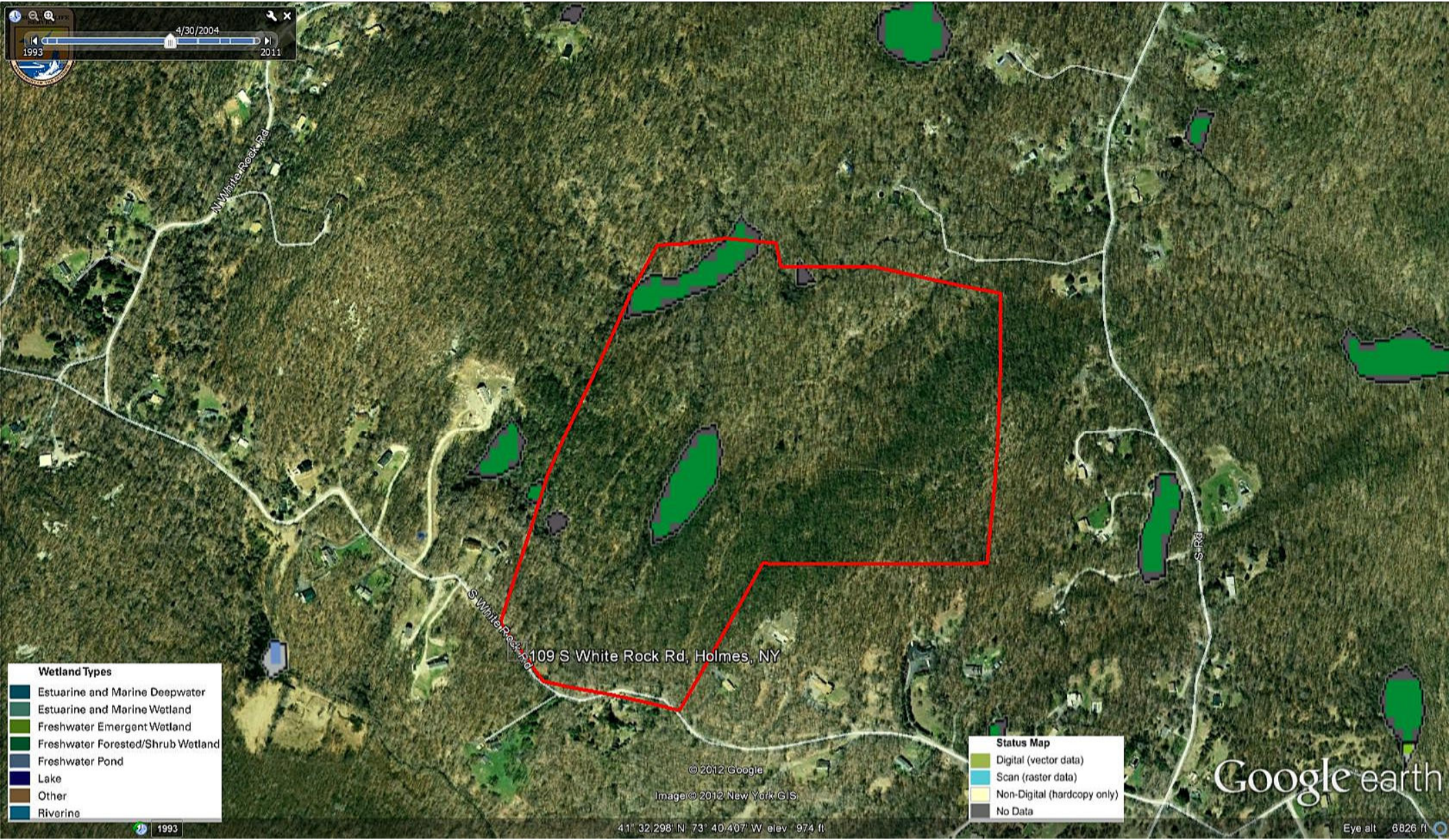


4/30/2004
1993 2011



- Wetland Types**
- Estuarine and Marine Deepwater
 - Estuarine and Marine Wetland
 - Freshwater Emergent Wetland
 - Freshwater Forested/Shrub Wetland
 - Freshwater Pond
 - Lake
 - Other
 - Riverine

- Status Map**
- Digital (vector data)
 - Scan (raster data)
 - Non-Digital (hardcopy only)
 - No Data

© 2012 Google
Image © 2012 New York GIS
41° 32' 298" N 73° 40' 407" W elev 974 ft

Google earth

Eye alt 6826 ft